

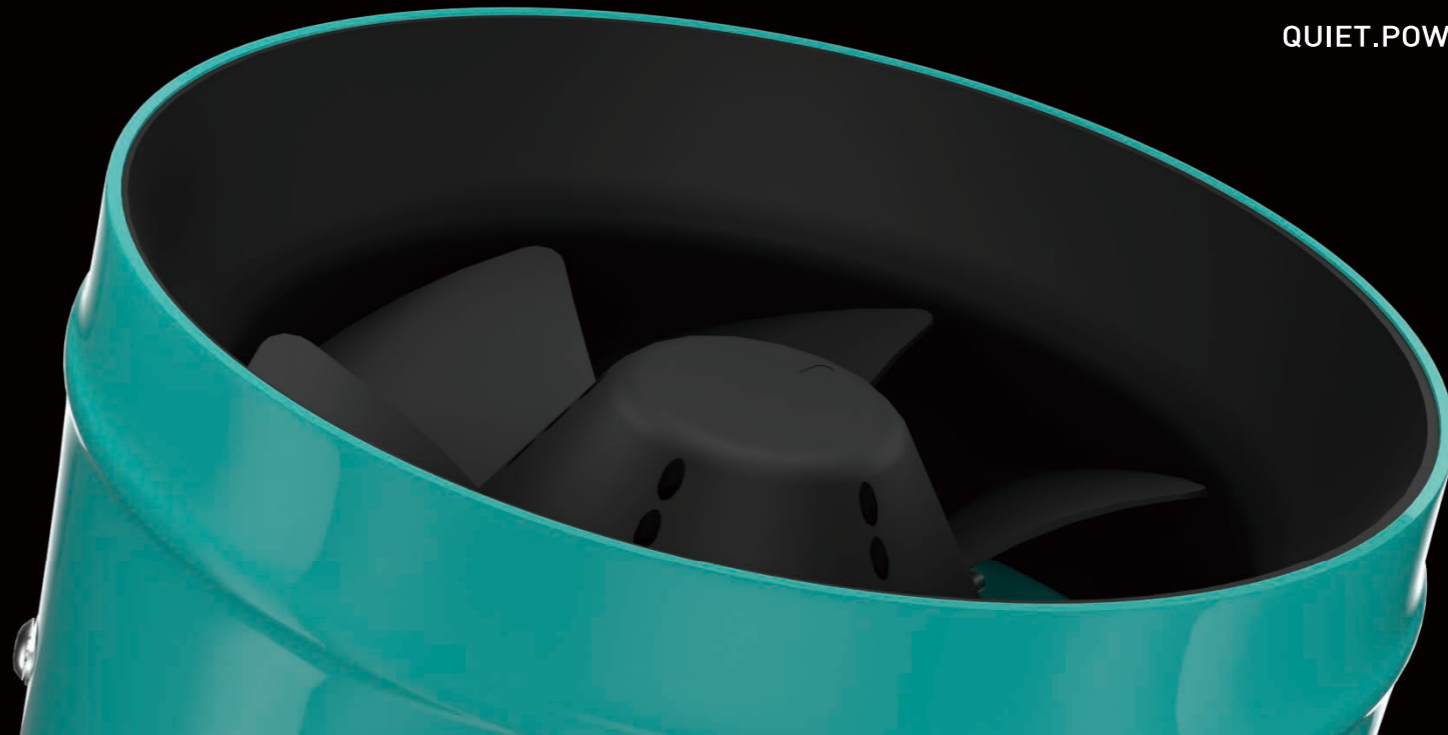
SIGILVENTUS  
*The Magic of Air, Perfected!*

A NEW GENERATION OF VENTILATION PRODUCTS  
**FANS & FILTERS**  
QUIET.POWERFUL.EFFICIENT.ODORLESS

SIGILVENTUS

Visit our website to find local dealer!

[www.sigilventus.com](http://www.sigilventus.com)



# SIGILVENTUS

The Magic of Air, Perfected

At SigilVentus, we don't just control the environment; we transform it. Our brand is synonymous with excellence in air quality management, featuring premier fan and filter systems that are second to none.

Inspired by the Latin phrase "SigilVentus," meaning "The Magical Spell of Air," we embody a vision that fuses innovation with nature. We are committed to crafting superior air ventilation and circulation solutions tailored for hydroponics and horticulture. Our products are designed to banish stagnant air, precisely regulate temperature and humidity, and enrich your plants with the optimal levels of CO<sub>2</sub>.

Join us in weaving the magic of perfect air into your green spaces, and witness your plants thrive like never before.

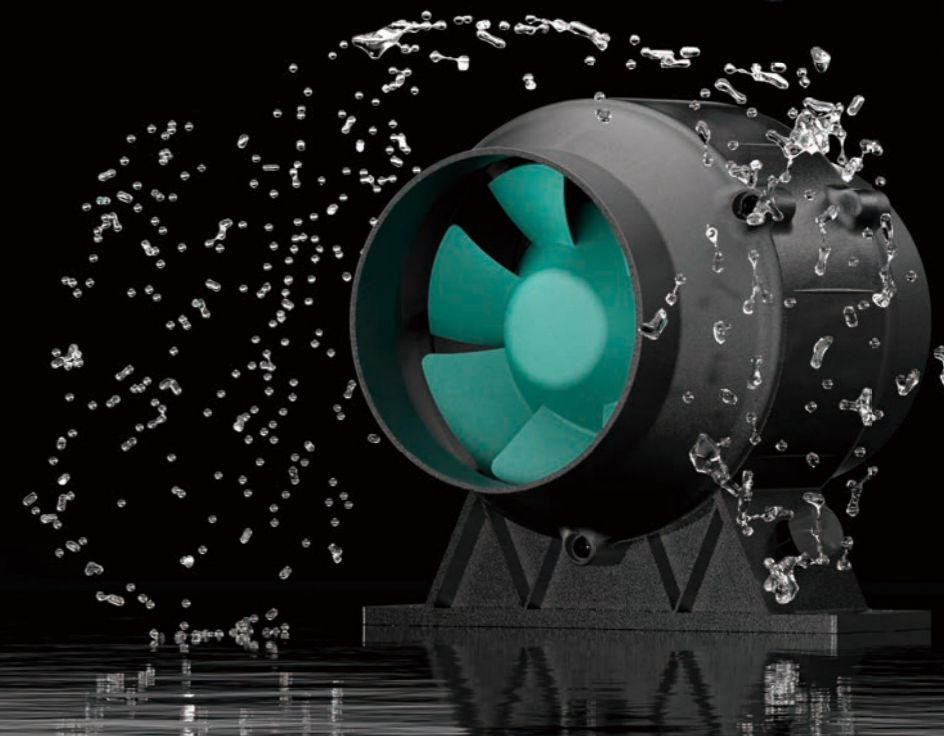
## IP68 WATERPROOF FAN

DESIGN FOR HIGH HUMIDITY GROWING ENVIRONMENT FOR APPLICATION THAT REQUIRE MOISTURE AND DUST PROTECTION, SIGILVENTUS OFFERS EC INLINE FAN WITH IP68 RATING IN MULTIPLE SIZES.

- + Glued sealed motor and PCB
- + Lightest, smallest high-protection fan
- + Powerful EC motor, perfect efficiency
- + Ready for any harsh environment, indoors or out, 24/7 operation



NEW





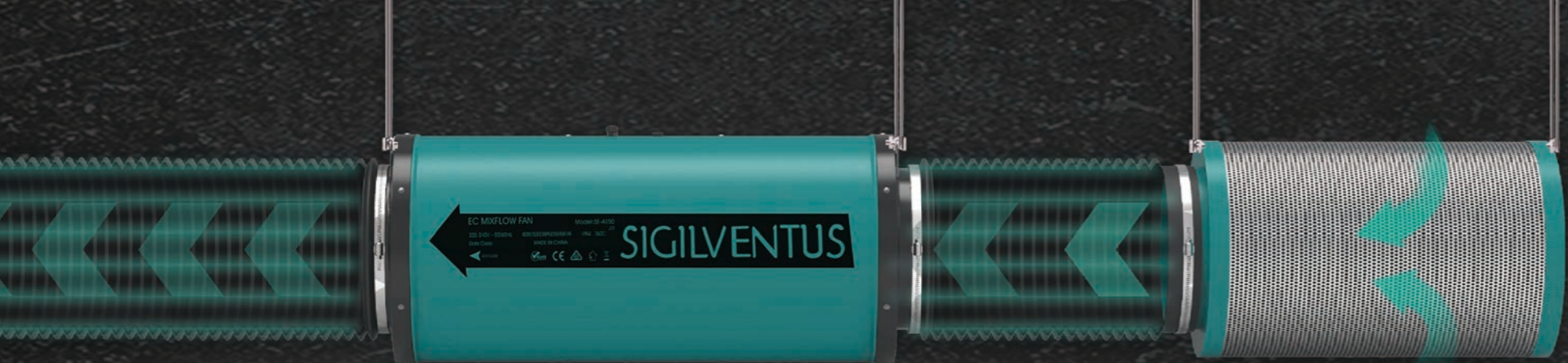
## ULTRA LIGHT SILENT DUCT FAN

INTRODUCING A PIONEERING LINE OF LIGHTWEIGHT SILENCED DUCT FANS, ENCASED IN ADVANCED EPP HOUSING AND EQUIPPED WITH OUR INNOVATIVE EC MOTORS, ENGINEERED FOR EXCEPTIONAL PERFORMANCE AND LONGEVITY EVEN IN HUMID CONDITIONS.

- + EPP housing with metallic flanges
- + Built with our latest EC motor with higher IP level
- + Output PWM and 0-10V control signals

NEW





## MORE QUIET MORE AIRFLOW

THREE KEY PRODUCTS COMBINE TO CREATE THE MOST SCIENTIFIC ECO INDOOR CULTIVATION VENTILATION SOLUTION

### SILENCED EC FAN

- + High density acoustic foam, low-noise design
- + EC motor, powerful airflow with lower power consumption

### PREMIUM ACTIVATED CARBON AIR FILTER

- + Premium charcoal with RC48 virgin activated granular carbon
- + 45mm deep carbon bed with high open area, less airflow loss

### SMART EC FAN CONTROLLER

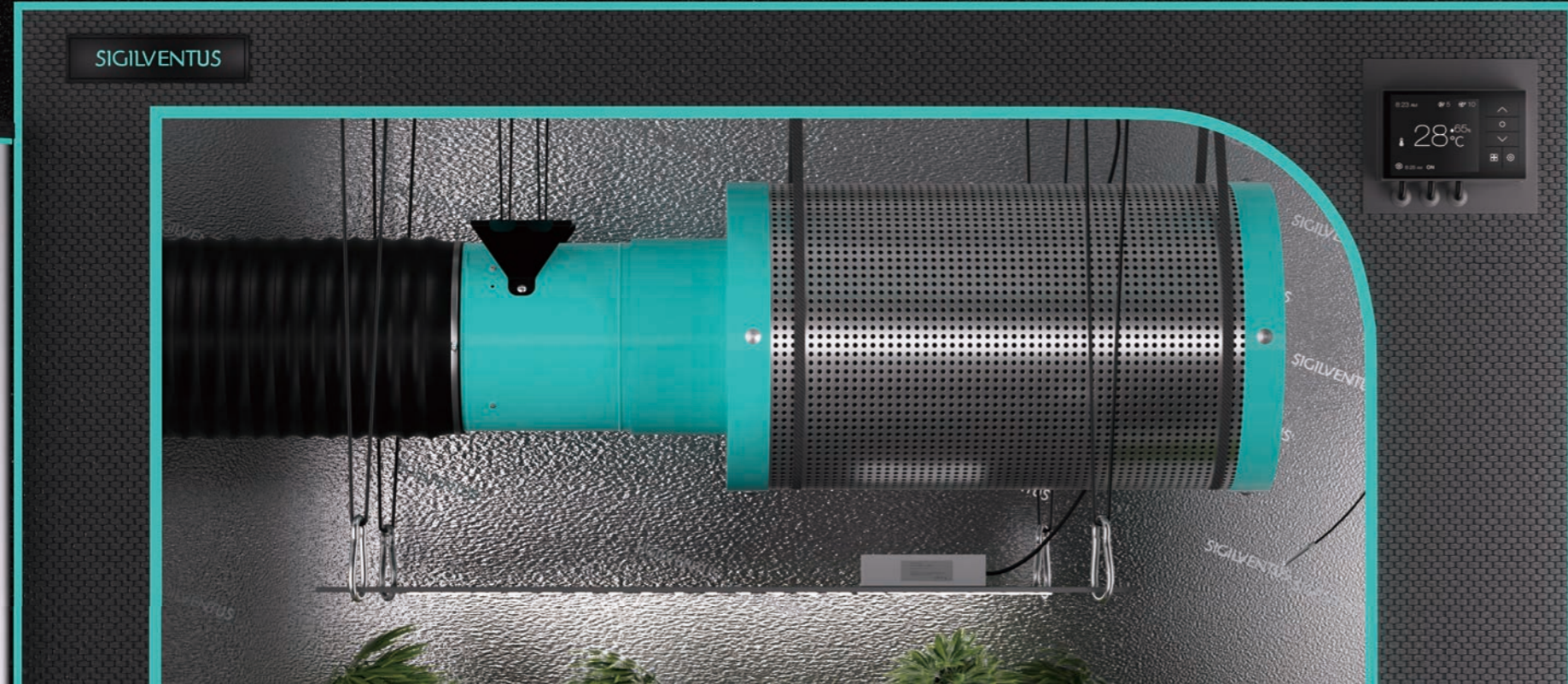
- + Temperature and humidity control with alarm and error detection
- + Auto control, differential air pressure adjustment



# COMPACT & EFFICIENT VENTILATION FOR ALL SIZES OF GROW TENT

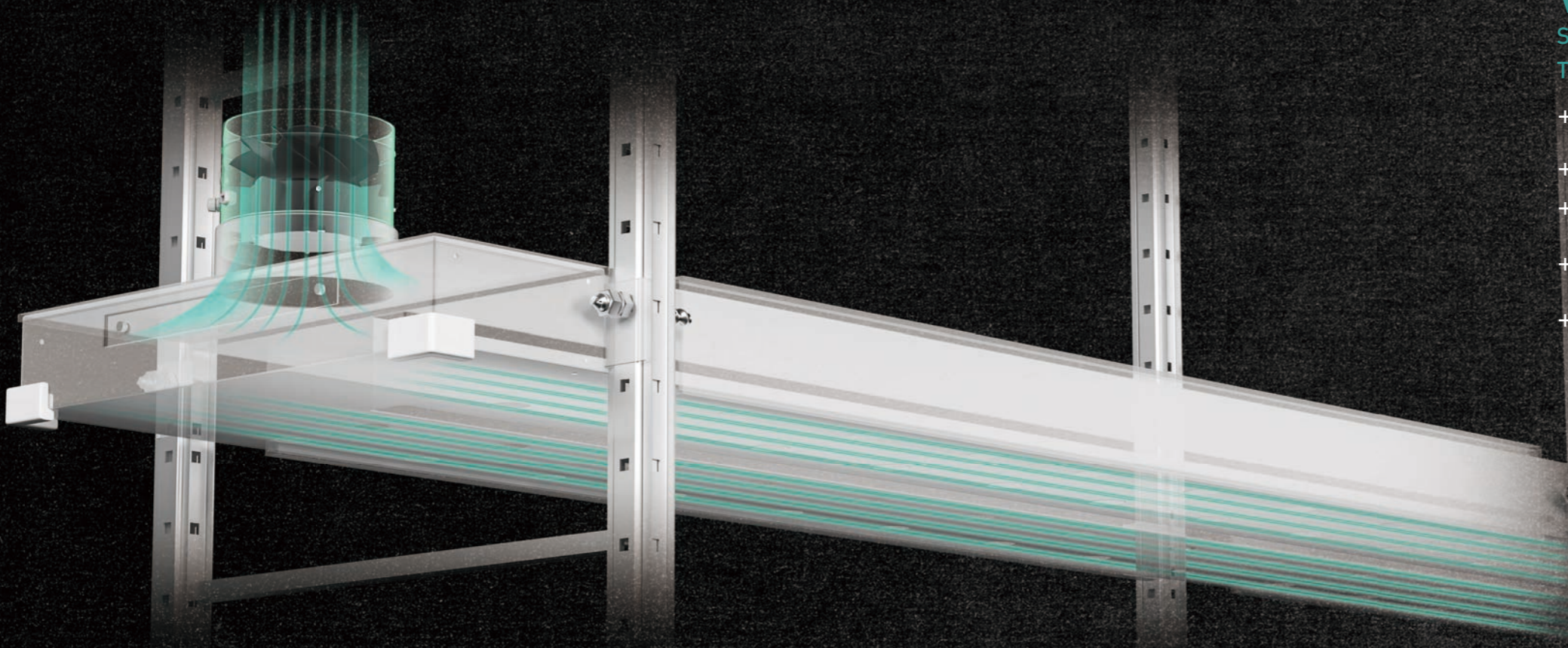
SIGILVENTUS INNOVATIVE FANS AND FILTERS GUARANTEE A CONTROLLED, ODOR-FREE AND FLOURISHING GROW SPACE

- + Fan size range from 4 inches to 14 inches, providing abundant options to meet the needs of various planting scenarios
- + The fan and filter pipe diameters are perfectly matched, reducing airflow loss
- + Transform your cultivation experience with our EC technology



SIGILVENTUS

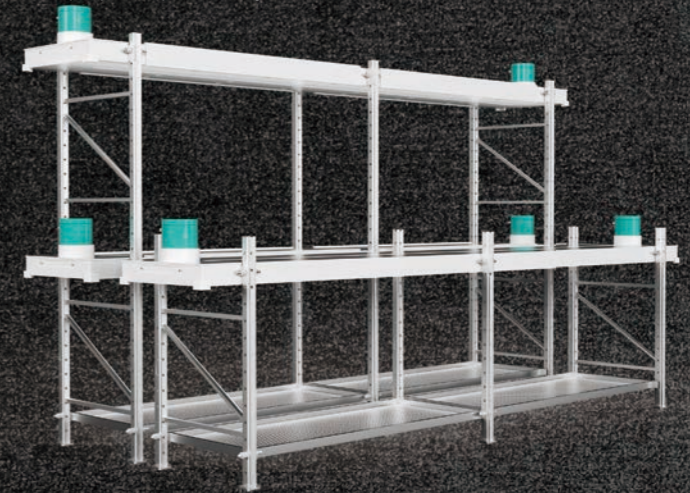




## VERTICAL FARMING VENTILATION

SIGILVENTUS OFFERS EFFICIENT GROW RACK SOLUTIONS, FEATURING THE BEST EC FANS AVAILABLE ON THE MARKET

- + The maximum air pressure can reach 73mmH<sub>2</sub>O(716Pa), and an effective transmission distance of up to 40 meters
- + The fan guarantee even air distribution, allowing every plant on the rack to breathe uniformly
- + The IP rating can reach IP65, preventing fan damage caused by high humidity environments due to the nutrient solution evaporation
- + SIGILVENTUS are compatible with multiple signal control and central integrated control, simplifying the complexities of individual fan management
- + EC fans consume 30%-50% less energy compared with traditional AC fans, prime choice for large-scale cultivation projects, promoting environmental sustainability



# LITELINE

Plastic EC Mix Flow Inline Fans

- + High static air pressure
- + Highly efficient and energy saving
- + Widely used in the intake, exhaust and circulation of air
- + Perfect match with filter for creating fresh air and odorless indoor growing environment
- + Global safety standard
- + IP68 rating with complete waterproof
- + Lighter but same powerful as metal housing EC fan



0-100% Variable Speed Control

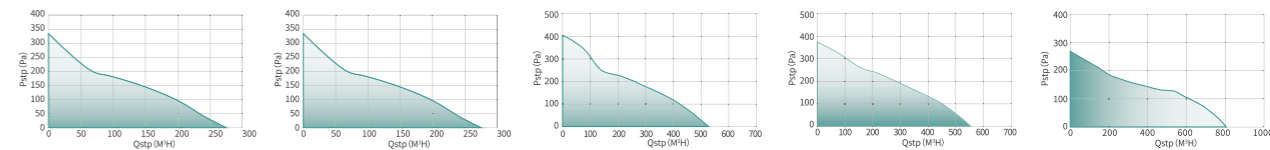


## SPECIFICATIONS

Note: The noise value is the measured value at the distance of 1 meter from the fan inlet

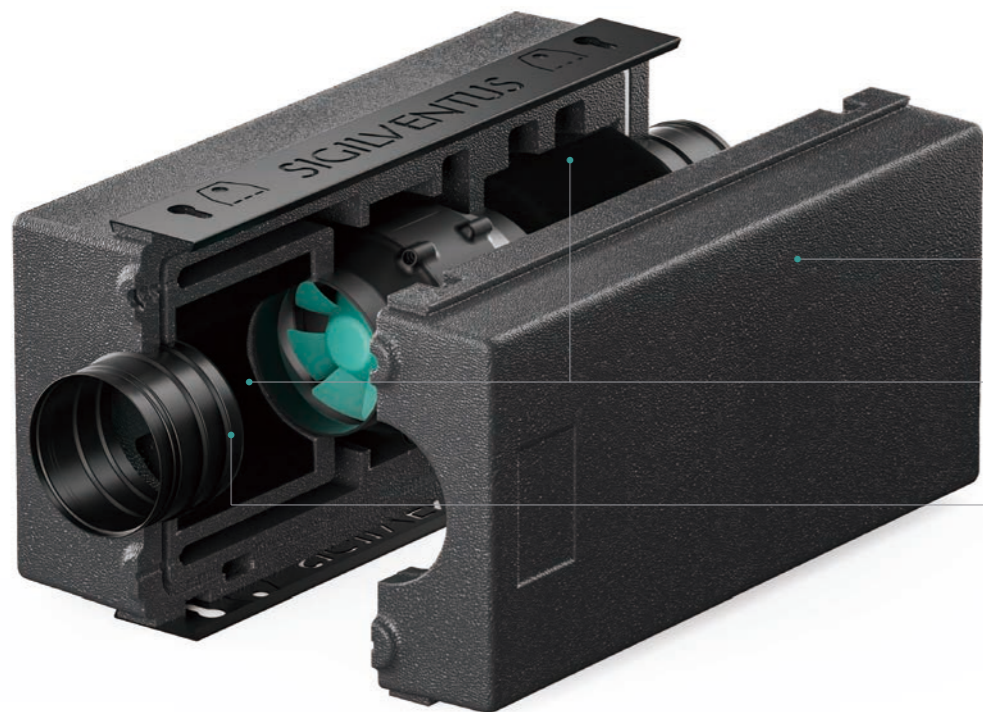
Model/Series:	SE-A100T04	SE-A125T04	SE-A150T04	SE-A160T04	SE-A200T04
Fan Size:	4inch/100mm	5inch/125mm	6inch/150mm	6.3inch/150mm	8inch/200mm
Net Weight:	0.7KG	0.9KG	1.9KG	1.9KG	2.5KG
Rated Voltage:	110-120VAC 220-240VAC	110-120VAC 220-240VAC	110-120VAC 220-240VAC	110-120VAC 220-240VAC	110-120VAC 220-240VAC
Max. Power C:	18W	18W	45W	45W	58W
Frequency:	50/60Hz	50/60Hz	50/60Hz	50/60Hz	50/60Hz
Max. Speed:	5000RPM	5000RPM	3500RPM	3500RPM	2600RPM
Max. Airflow:	160CFM/275M³H	160CFM/275M³H	306CFM/521M³H	326CFM/554M³H	472CFM/803M³H
Max. Static P:	34mmH²O/334Pa	34mmH²O/334Pa	41mmH²O/404Pa	39mmH²O/387Pa	29mmH²O/284Pa
Max. Noise L:	56.8dBA	54.4dBA	58dBA	60dBA	46dBA
IP Rating:	IP68	IP68	IP68	IP68	IP68
Housing:	Plastic	Plastic	Plastic	Plastic	Plastic
Motor Type:	EC Motor	EC Motor	EC Motor	EC Motor	EC Motor

PQ Curve:



# LITELINE SILENCED

ULTRA LIGHT EPP EC SILENT FANS



**EPP Material**

**Polyurethane Foam Material**

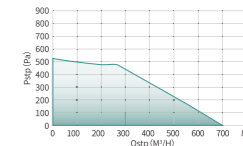
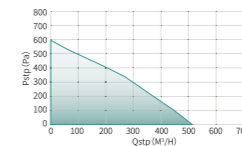
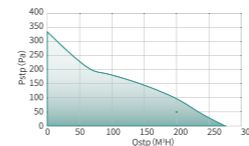
**Cold-Rolled Steel Material**

## SPECIFICATIONS

Note: The noise value is the measured value at the distance of 1 meter from the fan inlet

Model/Series:	SE-A100J04	SE-A150J04	SE-A200J04
Fan Size:	4inch/100mm	6inch/150mm	8inch/200mm
Net Weight:	2.3KG	3.9KG	5.5KG
Rated Voltage:	110-120VAC 220-240VAC	110-120VAC 220-240VAC	110-120VAC 220-240VAC
Max. Power C:	18W	75W	118W
Frequency:	50/60Hz	50/60Hz	50/60Hz
Max. Speed:	5000RPM	1350RPM	1550RPM
Max. Airflow:	160CFM/275M <sup>3</sup> H	304CFM/517M <sup>3</sup> H	412CFM/700M <sup>3</sup> H
Max. Static P:	34mmH <sup>2</sup> O/334Pa	60mmH <sup>2</sup> O/595Pa	54mmH <sup>2</sup> O/530Pa
Max. Noise L:	47dBA	46dBA	48dBA
IP Rating:	IP68	IPX4	IPX4
Housing:	EPP	EPP	EPP
Motor Type:	EC Motor	EC Motor	EC Motor

PQ Curve:





# PROLINE

## METAL EC MIX FLOW INLINE FANS

- + High static air pressure
- + Highly efficient and energy saving
- + Widely used in the intake, exhaust and circulation of air
- + Perfect match with filter for creating fresh air and odorless indoor growing environment
- + Global safety standard



8 Speeds Digital Controller

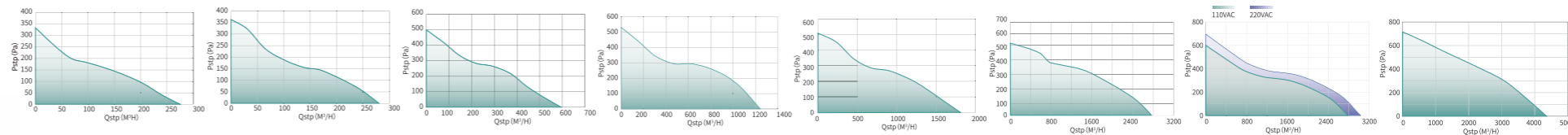


# SPECIFICATIONS

Note: The noise value is the measured value at the distance of 1 meter from the fan inlet

Model/Series:	SE-A100T01	SE-A125T01	SE-A150T01	SE-A200T01	SE-A250T01	SE-A300T01	SE-A315T01	SE-A355T01
Fan Size:	4inch/100mm	5inch/125mm	6inch/150mm	8inch/200mm	10inch/250mm	12inch/300mm	12inch/315mm	14inch/355mm
Net Weight:	1.1KG	1.1KG	1.6KG	2.5KG	3.0KG	10.5KG	8.5KG	11.5KG
Rated Voltage:	110-120VAC 220-240VAC	110-120VAC 220-240VAC	110-120VAC 220-240VAC	110-120VAC 220-240VAC	110-120VAC 220-240VAC	110-120VAC 220-240VAC	110-120VAC 220-240VAC	220~277VAC
Max. Power C:	18W	20W	40W	75W	150W	260W	260W 320W	550W
Frequency:	50/60Hz	50/60Hz	50/60Hz	50/60Hz	50/60Hz	50/60Hz	50/60Hz	50/60Hz
Max. Speed:	5000RPM	5000RPM	5000RPM	3800RPM	3200RPM	2800RPM	2800RPM 3000RPM	3000RPM
Max. Airflow:	160CFM/275M <sup>3</sup> H	166CFM/280M <sup>3</sup> H	350CFM/594M <sup>3</sup> H	710CFM/1205M <sup>3</sup> H	1065CFM/1808M <sup>3</sup> H	1628CFM/2768M <sup>3</sup> H	1639CFM/2787M <sup>3</sup> H 1757CFM/2987M <sup>3</sup> H	2570CFM/4357M <sup>3</sup> H
Max. Static P:	34mmH <sup>2</sup> O/334Pa	37mmH <sup>2</sup> O/363Pa	51mmH <sup>2</sup> O/500Pa	53mmH <sup>2</sup> O/520Pa	52mmH <sup>2</sup> O/510Pa	52mmH <sup>2</sup> O/512Pa	61mmH <sup>2</sup> O/598Pa 69mmH <sup>2</sup> O/677Pa	73mmH <sup>2</sup> O/716Pa
Max. Noise L:	56.8dBA	54.4dBA	60dBA	61.6dBA	65dBA	70dBA	76dBA 78dBA	80dBA
IP Rating:	IPX4	IPX4	IPX4	IPX4	IPX4	IP65	IP65	IP65
Housing:	Painted Metal	Painted Metal	Painted Metal	Painted Metal	Painted Metal	Painted Metal	Painted Metal	Painted Metal
Motor Type:	EC Motor	EC Motor	EC Motor	EC Motor	EC Motor	EC Motor	EC Motor	EC Motor

PQ Curve:



# PROLINE SILENCED

## METAL HOUSING EC SILENT FANS



### Rotatable Spring Anti Vibration Design

SIGILVENTUS silenced fans use durable piano wire springs to attach EC fan motor to the housing, vibration-free and stable operation.

### Metal Painted Leak Free Acoustic Housing

The acoustic housing of SigilVentus silenced fan is designed longer than other products in the market to obtain more silent fan operation even it is at full speed.

### Hanging Brackets

There are 4 hanging brackets in each of the silenced fans, ensuring more safety and no swinging after installation.

### High Density Acoustic Foam

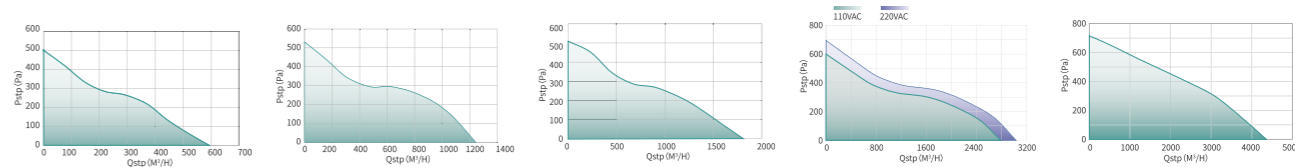
SIGILVENTUS silenced fan uses eco and fire proof acoustic foam. The high density of the foam makes the fan to work silently without restricting airflow. It is a quieter and powerful extractor fan for your indoor hydroponic environment.

# SPECIFICATIONS

Note: The noise value is the measured value at the distance of 1 meter from the fan inlet

Model/Series:	SE-A150J01	SE-A200J01	SE-A250J01	SE-A315J01	SE-A355J01
Fan Size:	6inch/150mm	8inch/200mm	10inch/250mm	12inch/315mm	14inch/355mm
Net Weight:	5.0KG	7.5KG	13.7KG	21KG	26.3KG
Rated Voltage:	110-120VAC 220-240VAC	110-120VAC 220-240VAC	110-120VAC 220-240VAC	110-120VAC 220-240VAC	220-277VAC
Max. Power C:	40W	75W	150W	260W 320W	550W
Frequency:	50/60Hz	50/60Hz	50/60Hz	50/60Hz	50/60Hz
Max. Speed:	5000RPM	3800RPM	3200RPM	2800RPM 3000RPM	3000RPM
Max. Airflow:	350CFM/594M <sup>3</sup> H	710CFM/1205M <sup>3</sup> H	1065CFM/1808M <sup>3</sup> H	1639CFM/2787M <sup>3</sup> H 1757CFM/2987M <sup>3</sup> H	2563CFM/4357M <sup>3</sup> H
Max. Static P:	51mmH <sub>2</sub> O/500Pa	53mmH <sub>2</sub> O/520Pa	52mmH <sub>2</sub> O/510Pa	61mmH <sub>2</sub> O/598Pa 69mmH <sub>2</sub> O/677Pa	73mmH <sub>2</sub> O/716Pa
Max. Noise L:	50dBA	51dBA	55dBA	66dBA 68dBA	70dBA
IP Rating:	IPX4	IPX4	IPX4	IP65	IP65
Housing:	Painted Metal	Painted Metal	Painted Metal	Painted Metal	Painted Metal
Motor Type:	EC Motor	EC Motor	EC Motor	EC Motor	EC Motor

PQ Curve:



# VENTUS FILTERS

## ACTIVATED CARBON AIR FILTER

- + Premium charcoal
- + RC48 virgin granular carbon
- + Deep carbon bed
- + High open area
- + Large air flow
- + For seamless operation pair these filters with all SIGILVENTUS EC fans



RC48 Charcoal

## SPECIFICATIONS

Model:	VENTUS-0412S	VENTUS-0416S	VENTUS-0516S	VENTUS-0624S	VENTUS-0630S	VENTUS-0824S	VENTUS-0830S	VENTUS-1024S	VENTUS-1030S	VENTUS-1224S	VENTUS-1230S
Duct Opening:	4inch/102mm	4inch/102mm	5inch/125mm	6inch/153mm	6inch/153mm	8inch/204mm	8inch/204mm	10inch/254mm	10inch/254mm	12inch/319mm	12inch/319mm
Length:	12inch/314mm	16inch/414mm	16inch/414mm	24inch/615mm	30inch/765mm	24inch/615mm	30inch/765mm	24inch/615mm	30inch/765mm	24inch/615mm	30inch/765mm
Air Flow:	200CFM/340M <sup>3</sup> H	350CFM/594M <sup>3</sup> H	400CFM/680M <sup>3</sup> H	550CFM/934M <sup>3</sup> H	680CFM/1156M <sup>3</sup> H	750CFM/1275M <sup>3</sup> H	800CFM/1360M <sup>3</sup> H	850CFM/1443M <sup>3</sup> H	1050CFM/1785M <sup>3</sup> H	1400CFM/2378M <sup>3</sup> H	1600CFM/2717M <sup>3</sup> H
Medium:	Premium Charcoal	Premium Charcoal	Premium Charcoal	Premium Charcoal	Premium Charcoal	Premium Charcoal	Premium Charcoal	Premium Charcoal	Premium Charcoal	Premium Charcoal	Premium Charcoal
Grade:	RC-48	RC-48	RC-48	RC-48	RC-48	RC-48	RC-48	RC-48	RC-48	RC-48	RC-48
Carbon Bed:	1.8inch/45mm	1.8inch/45mm	1.8inch/45mm	1.8inch/45mm	1.8inch/45mm	1.8inch/45mm	1.8inch/45mm	1.8inch/45mm	1.8inch/45mm	1.8inch/45mm	1.8inch/45mm
Carbon Weight:	2.9kg	3.8kg	3.7kg	6.9kg	8.5kg	10.8kg	13.4kg	10kg	12.4kg	14.5kg	18kg
Total Weight:	4kg	5.2kg	5kg	8.7kg	10.8kg	12.8kg	15.9kg	13.2kg	16.5kg	17.2kg	21.5kg
Filter Type:	Pre-filter	Pre-filter	Pre-filter	Pre-filter	Pre-filter	Pre-filter	Pre-filter	Pre-filter	Pre-filter	Pre-filter	Pre-filter
Housing Material:	Cold rolled steel	Cold rolled steel	Cold rolled steel	Cold rolled steel	Cold rolled steel	Cold rolled steel	Cold rolled steel	Cold rolled steel	Cold rolled steel	Cold rolled steel	Cold rolled steel



# FAN CONTROL

SMART EC MOTOR CONTROLLERS

## SIGILVENTUS EC Inline Fans

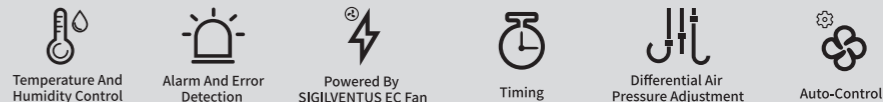


## Probe Of Temperature And Humidity



## Temperature and Humidity Controller

Our smart EC fan controller with temperature and humidity sensor puts you in charge of your comfort and energy efficiency. provide the perfect balance of temperature, humidity, and air flow. experience the ultimate in smart home living and intelligent indoor growing.



## Temperature Controller

6 speed controller with thermal probe for monitoring environmental temperature, accurate ventilation and energy saving, supporting control of up to 4 EC fans simultaneously and mode selection of manual, auto and alert.



## Wireless Remote Controller

Allows you to control your EC fan wirelessly. 6 pre-set speed levels (15-100% output). 50ft / 15m signal range, which works through walls, floors and ceilings. Ideal for fans installed in hard to reach places.



Extension Control cable



DIY Speed Control Cable



3 Pins Controller Adaptor



RJ45 Controller Adaptor

# FAN GRILLE

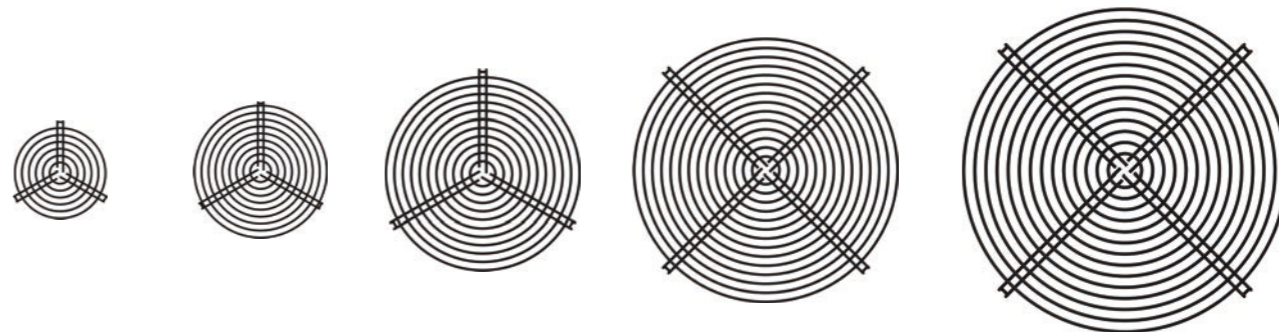
QUALITY FAN PROTECTION GUARD

- + Ideal protection against electronic parts injuries caused by fan blades' rotating
- + Keeps stray wires or fingers safe from fans, simple but useful! Easy to remove and clean
- + Fan Grilles / Guards are ideal for improving the appearance and safety of your blowhole modifications or other system fans



## SPECIFICATIONS

Product Model:	FG-150A	FG-200A	FG-250A	FG-315A	FG-355A
Dimension:	Φ156*21mm	Φ206*26mm	Φ256*28mm	Φ321*33.5mm	Φ361*36mm
Material:	C1008 Steel	C1008 Steel	C1008 Steel	C1008 Steel	C1008 Steel
Finish:	Electroplating	Electroplating	Electroplating	Electroplating	Electroplating
Ring Diameter:	Φ156mm	Φ206mm	Φ256mm	Φ321mm	Φ361mm
Rib Diameter:	Φ150mm	Φ200mm	Φ250mm	Φ315mm	Φ355mm
Pull Force:	0.125kg	0.217kg	0.3kg	0.471kg	0.54kg





Contact Our Distributor :

A large rectangular area defined by a dashed white border, intended for contact information.